

Pavilion View, Lindley, Huddersfield, West Yorkshire, HD3 3WU

Offers Over £500,000

Council Tax Band: F



GUIDE PRICE £525,000 - £550,000 - Open House Estate Agents are proud to present this Energy Efficient Stonebuilt Executive 4 Bedroom Detached Home in Lindley.

This Property has a Large Corner Plot in a concealed Cul De Sac Location, with 2 Ensuites with Double Showers in 2 Bedrooms, Contemporary Decor throughout - and Ample Parking space for additional vehicles along with open views to the front of the property.

There is also Planning Permission granted for a rear Extension to this property, should you wish to add more living space.

This property would suit those who wish to have the privacy of a Cul de sac Corner Plot Location with the ability to easily access the M62 Network for Leeds/Manchester/Nationwide Travel.

The property features 2 Ensuite Bedrooms which are perfect for anyone who has a growing family, with ample parking available with the Double Garage, Driveway and further parking to the front.

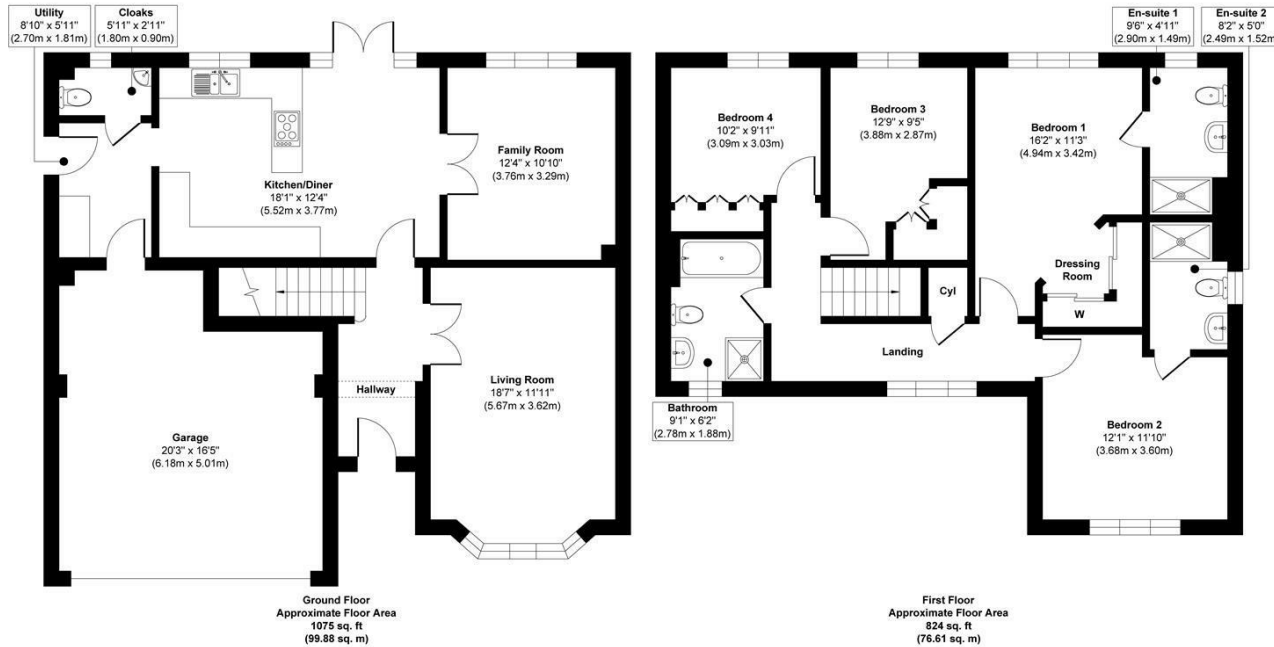
This home comes with a super efficient B rating for Energy Efficiency.

Call us now to arrange your viewing - our lines are open 24 hours a day, 7 days a week to take your call!

EPC Rating B
Council Tax Band F

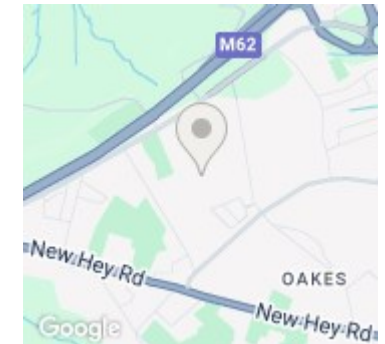


Open House Huddersfield



Approx. Gross Internal Floor Area 1899 sq. ft / 176.49 sq. m (Including Garage)

Illustration for identification purposes only, measurements are approximate, not to scale.
Produced by Elements Property



Energy Efficiency Rating		
	Current	Potential
Very energy efficient - lower running costs		
(92 plus) A		
(81-91) B	84	
(69-80) C		
(55-68) D		
(39-54) E		
(21-38) F		
(1-20) G		
Not energy efficient - higher running costs		
England & Wales	EU Directive 2002/91/EC	